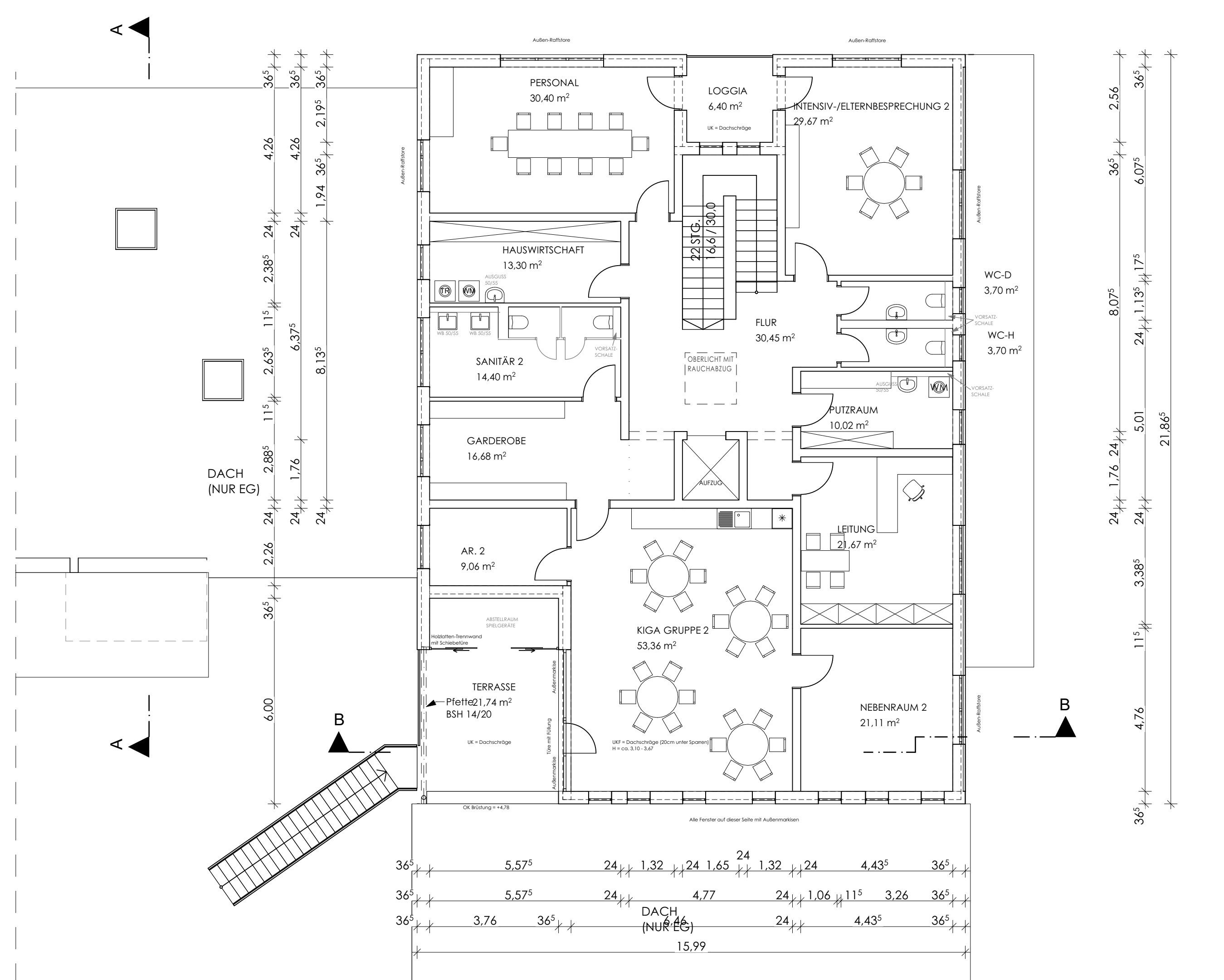
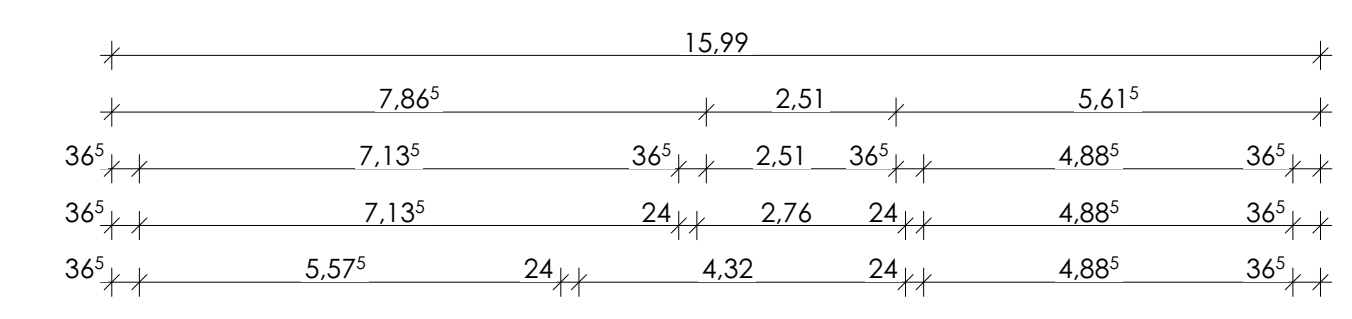
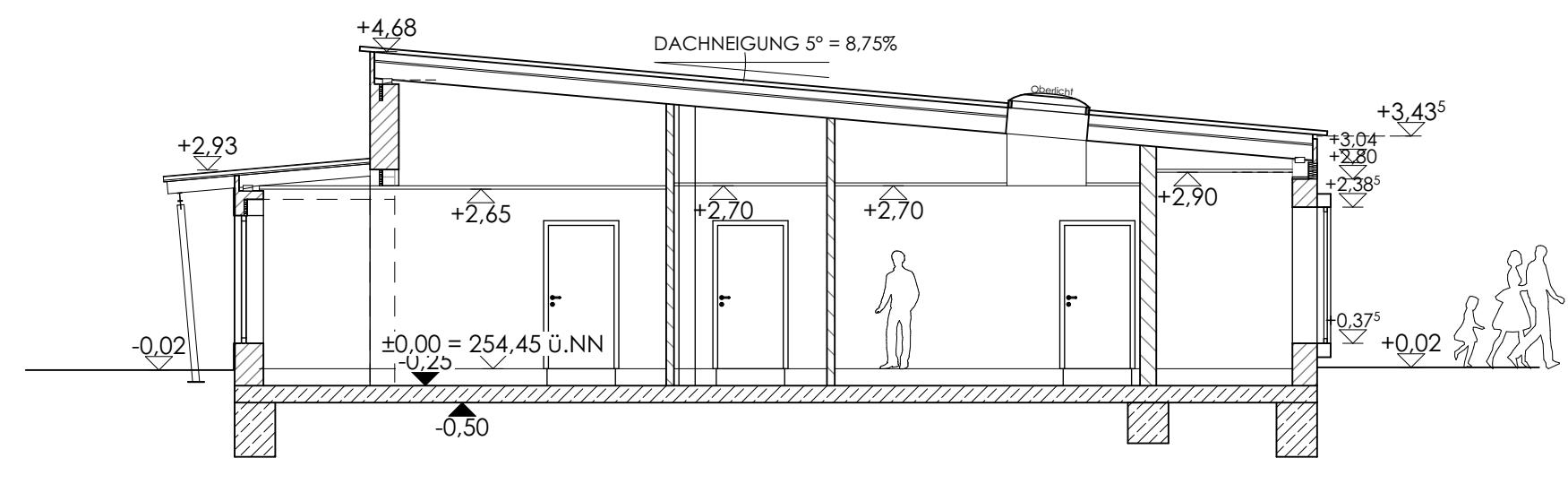
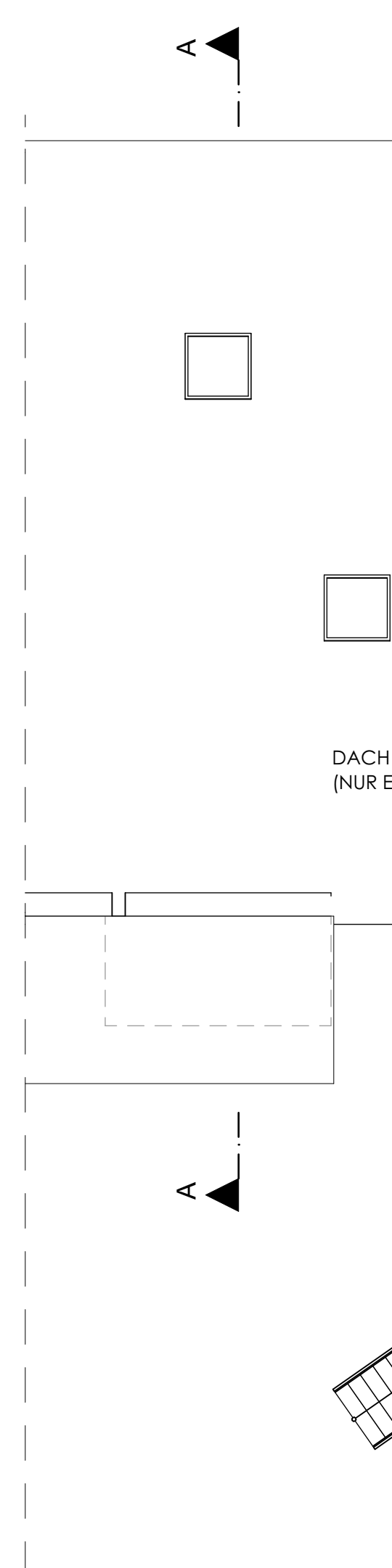
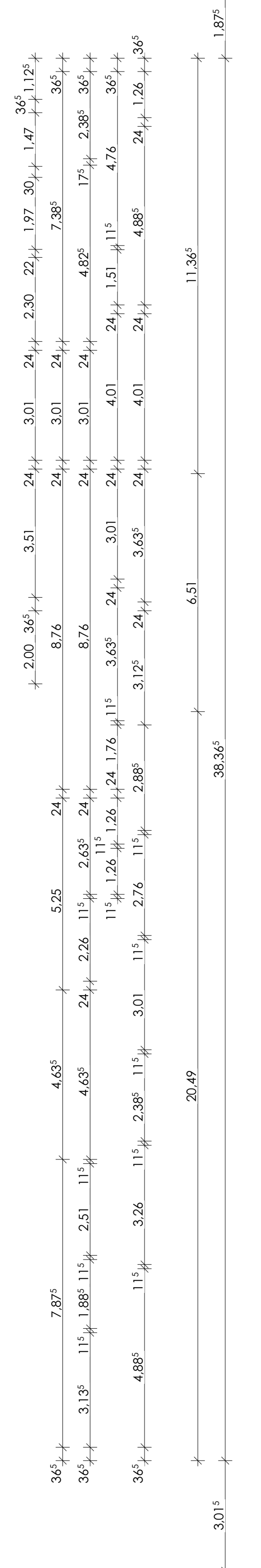


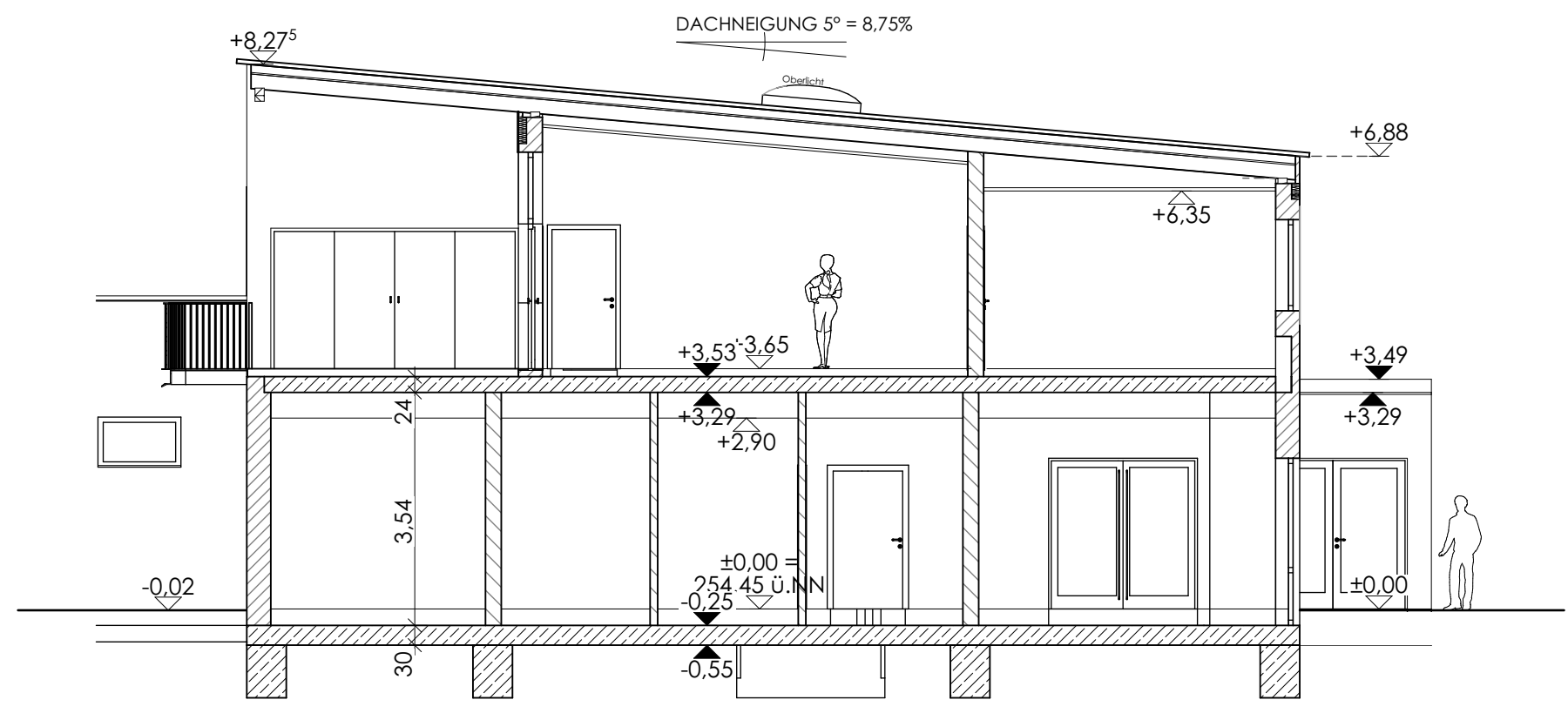
ERDGESCHOSS



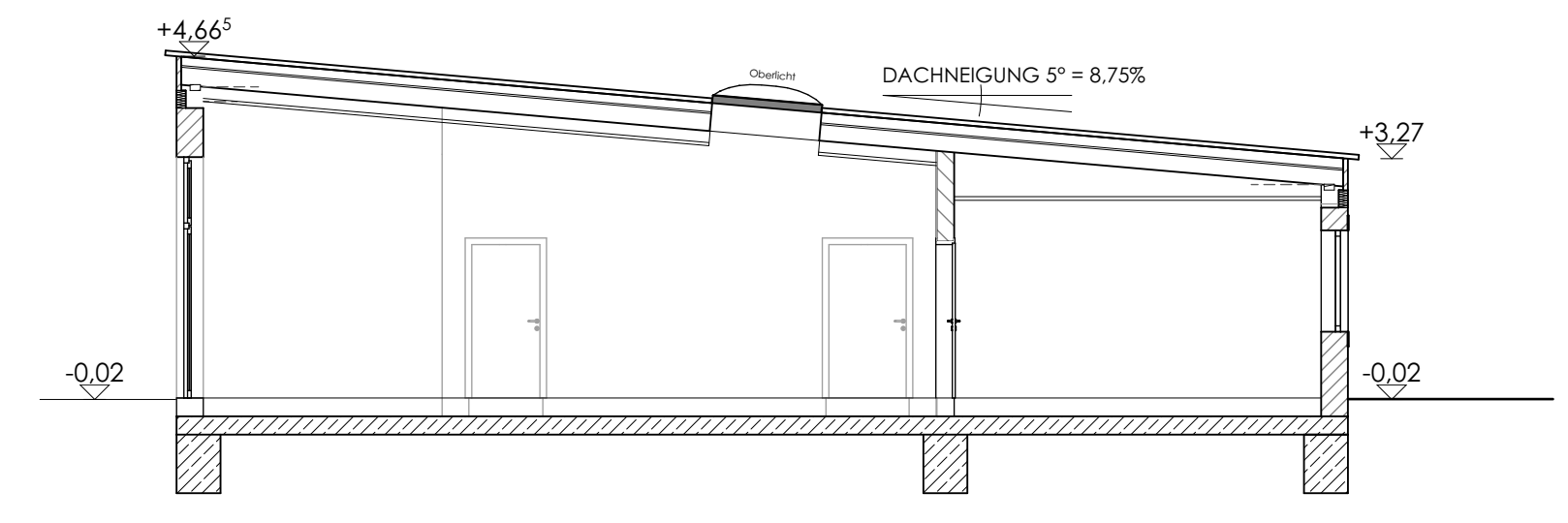
OBERGESCHOSS



SCHNITT A - A



SCHNITT B - B



SCHNITT C - C

PROJEKT NEUBAU EINER KINDERTAGESSTÄTTE MIT TAGESPFLEGEINRICHTUNG BAUGEBIET "HAIDWIESEN"; 96146 ALTENDORF FL.-NR.: 667, GMKG, ALTENDORF

PLAN EINGABEPLAN M 1:100 GRUNDRISS, SCHNITTE

BAUHERR GEMEINDE ALTENDORF JURASTRASSE 1 96146 ALTENDORF

NACHBARN

PLANVERFASSER dresel architektur WERNER DRESEL EGLÖFFSTEINER RING 52 96146 ALTENDORF TEL. 09545-950486 FAX 09545-950485 mail@dreselarchitektur.de ALTENDORF, 17.04.2023

